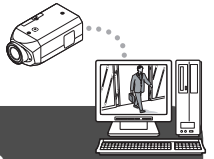


This reference provides the required information from setting up the network to accessing the camera. For information on operating environment and wiring connection, see the installation manual.



1 Setting up the network information of the camera

<Default values>

- ① DHCP : OFF
- ② IP address : 192.168.0.2
- ③ Subnet mask : 255.255.255.000
- ④ Gateway : 192.168.0.1
- ⑤ Network speed (bandwidth limitation) : NO LIMIT
- ⑥ Port No. : 80

If you use the default values, you do not have to perform the setups shown below.

1 MENU → [MENU] → (MENU END) → SET

Select [DHCP].

DHCP OFF SET

IP ADDRESS SET

SUBNETMASK SET

GATEWAY SET

The mark indicating that the item is selectable.

① DHCP OFF SET

② IP ADDRESS SET

③ SUBNETMASK SET

④ GATEWAY SET

DHCP OFF: Uses fixed IP address.
DHCP ON: Automatically allocates IP address.
 • If you set "DHCP ON", go to step 4.

2 Select [IP ADDRESS].

DHCP OFF SET

IP ADDRESS SET

SUBNETMASK SET

GATEWAY SET

IP ADDRESS
192.168.0.002

Select the entry position.

Select a value.

3 SET Use the same procedure as in step 2 to set up [SUBNETMASK] and [GATEWAY].

4 Select [NETWORK SPEED]

NETWORK SPEED NO LIMIT SET

PORT 00080 SET

DEFAULT OFF SET

[MENU] → (MAIN MENU)

⑤ NETWORK SPEED NO LIMIT SET

⑥ PORT 00080 SET

DEFAULT OFF SET

[MENU] → (MAIN MENU)

Select a network speed (bandwidth limitation).
 • NO LIMIT, 128, 256, 512 (Kbps), 1, 2, 3, 4, 5, 6 (Mbps)

5 Select [PORT].

NETWORK SPEED NO LIMIT SET

PORT 00080 SET

PRESET OFF SET

[MENU] → (MAIN MENU)

PORT 00080

Select the entry position.

Select a value.

[MENU] → (NETWORK)

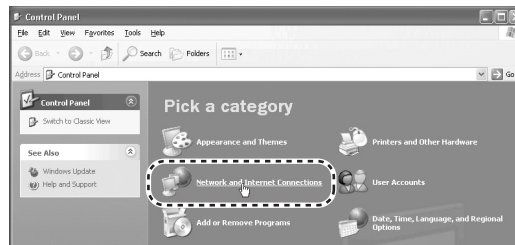
6 SET MENU MENU Setup finished.

2 Setting up the network information of the computer

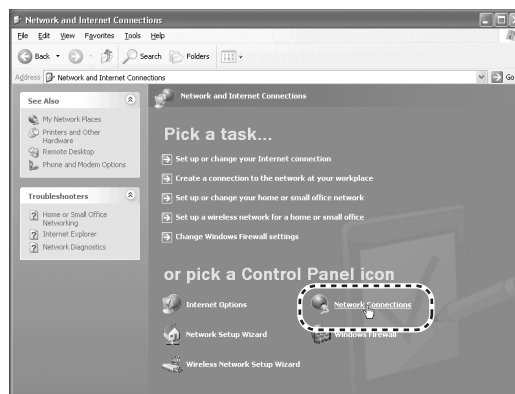
Configure appropriate TCP/IP settings in accordance with your operating system.

■ The following descriptions are based on the screens displayed on the Windows XP. If your PC runs on Windows Vista, click [Start] → [Control Panel] → [Network and Sharing Center] → [Manage Network Connections], and then go to step 3.

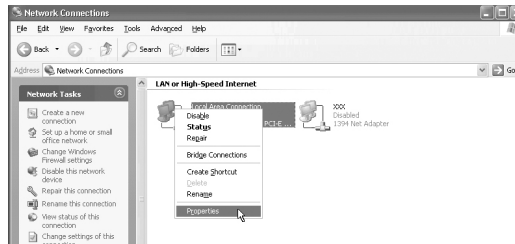
1 Click [Start] → [Control Panel] → [Network and Internet Connections].



2 Click [Network Connections].

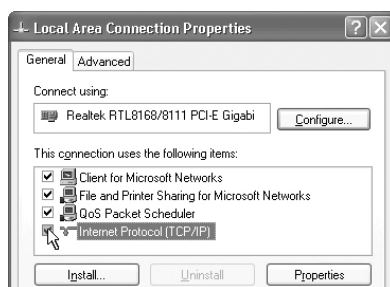


3 Right-click on the LAN interface (Ethernet adapter) icon used for accessing the camera and click [Properties] in the context menu.

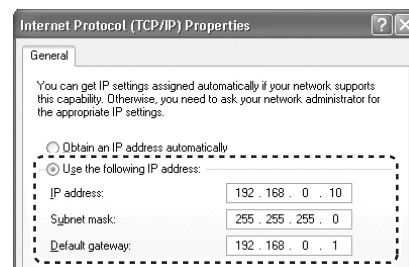


4 In the [This connection uses the following items:] list box, select the [Internet Protocol Version 4 (TCP/IP)] check box, and then click [Property].

- If your PC runs on Windows Vista, select [Internet Protocol (TCP/IPv4)] check box.



5 Select the [Use the following IP address:] radio button and specify the [IP address:], [Subnet mask:] and [Default gateway:] fields.



If the IP address for the camera is set to "192.168.0.2", enter "192.168.0.xxx". For "xxx", specify any value that does not conflict with the values specified for other PCs or network devices, or one that falls within the IP address range allocated by the DHCP server.

6 Confirm the settings and click the [OK] button.

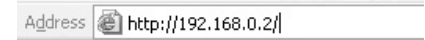
☞ If you use UPnP (Universal Plug and Play) to access the camera, refer to the "Electronic Manual" contained in the supplied CD-ROM.

3 Viewing live video from the camera

1 Start Internet Explorer.

2 Type the IP address of the camera in the browser's address bar, and press [Enter] key.

(Example of IP address entered)



3 Enter User Name and Password in the login screen, and click [OK] button.

☞ When you log in for the first time, type the following User name and Password.

- User name: admin
- Password: admin



4 Click the Language button.



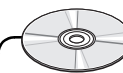
- Switches over to the live screen.
 (From the second login onwards, the live screen appears automatically by skipping the language selection screen.)



Control panel Live screen



You can configure various settings from the Menu screen displayed on your PC.
 For information on the menu, see the reverse side of this sheet.
 For detailed information on the settings, refer to the "Electronic Manual" contained in the supplied CD-ROM.



You can download to view the video which is recorded through the camera.
 To do so, use the supplied CD-ROM to install "HDC Utilities" software application program on your PC.
 ☞ Refer to page 19 of the "Instruction Manual".

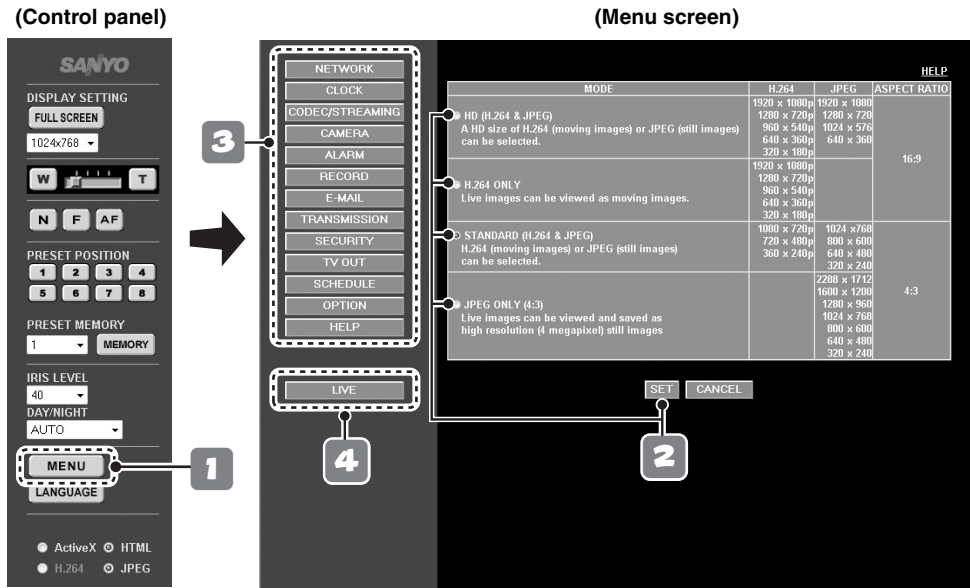
Setting up the camera from the Menu screen displayed on PC

This camera is shipped with the standard setting values and you can start using the camera without performing any settings. If necessary, make appropriate settings or adjustment according to your usage.

For details, refer to the electronic manual contained in the supplied CD-ROM.

● If you have trouble adjusting the camera, consult your dealer or an Authorized Sanyo Service Center.

- 1 Display the Menu screen.
- 2 Select monitor display mode and click the [SET] button.
- 3 Display a SETTINGS screen for each menu.
- 4 Return to the live screen.



* The control panel shown above represents the one for admin user.

Menu button list

Menu button	Description
NETWORK	NETWORK SETTINGS screen: Configure the network information on the camera such as IP address and subnet mask.
CLOCK	CLOCK SETTINGS screen: Configure the time information required for network connections and live video recording, which includes the current date and time, summer time (daylight saving time), and automatic clock adjustment.
CODEC/STREAMING	CODEC/STREAMING SETTINGS screen: Configure the image quality and transmission method to be used for transmitting the still images or video that were recorded through the camera.
CAMERA	CAMERA SETTINGS screen: Configure the monitoring conditions (e.g. lens and focus) and the operating conditions (e.g. day/night and privacy mask) in line with the installation environment of the camera.
ALARM	ALARM SETTINGS screen: Configure alarm input/output and motion sensor.
RECORD	RECORD SETTINGS screen: Configure the following conditions for recording images through the camera: • Conditions for normal recording, alarm recording, and timer setting • Setting for the REC button (for Emergency recording) • Backup recording setting in the event of communication error due to network failure during recording with the special software. • Initialization of SD card or external hard disk drive and settings for recording area • Overwriting and automatic deletion of record data
E-MAIL	E-MAIL SETTINGS screen: Configure automatic e-mail transmission. Image data can be attached. • Sending e-mail when an alarm is detected. • Sending e-mail at specified intervals
TRANSMISSION	IMAGE TRANSFER SETTINGS screen: Configure to transfer to PC the live video recorded through the camera. • HTTP: You can confirm the settings you made by using the optionally available "VA-SW3050 Server/Client" recorder/player software. • FTP: Transfers the image to the FTP server.
SECURITY	SECURITY SETTINGS screen: You can either permit or reject access to the cameras.
TV OUT	TV OUT SETTING screen: Select the display position on the monitor screen for the information such as camera title. • When you use the SD OUT terminal, you can clip any selected portion of the video for intensive monitoring. • When you use the HDMI terminal, you can select the screen size.
SCHEDULE	SCHEDULE SETTINGS screen: Configure the schedules for sending e-mail, transferring image and moving to the preset position. You can also specify the dates to be regarded as holidays.
OPTION	OPTION SETTINGS screen: <ul style="list-style-type: none"> • UPnP function • Power indicator/Error indicator setting (front panel) • Tamper detection • Firmware version upgrade <ul style="list-style-type: none"> • Initialization of settings • Backup and restoration of each menu configured through the network • Restarting the system, checking system information
HELP	Provides the descriptions of individual functions.

CAMERA CAMERA SETTINGS screen:

Adjusting Surveillance Image

VIEW

You can configure two types of "CAMERA SETTINGS" for different monitoring conditions.

- CAM1 (e.g. for day time)
- CAM2 (e.g. for night time)

IRIS

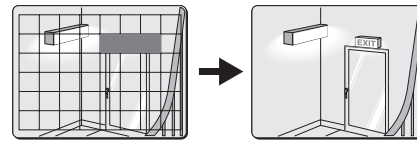
Set the lens iris.

- AUTO
- MANUAL

WHITE BALANCE

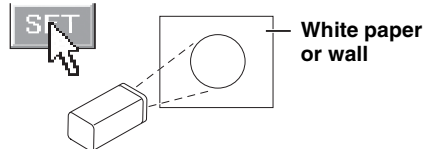
■ ATW (Auto Tracing White balance)

- You can configure the masking when an extremely bright light source or a dark spot exists in the video image.



■ AWC (Auto White balance Control)

- Push to lock the button to make adjustment to a white subject so that it appears natural white.

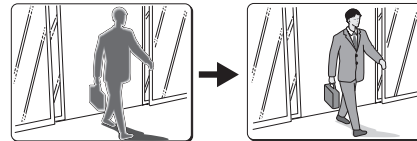


- 3200 (for indoor use)
- 5600 (for outdoor use)
- FLUORESCENT (for fluorescent light)
- MWB (Manual White Balance)

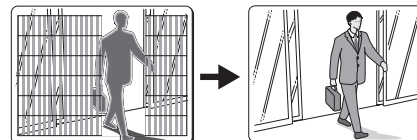
BLC

Compensates the backlight.

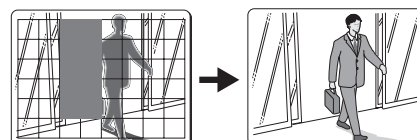
- MULTI (Multi-spot evaluative metering)



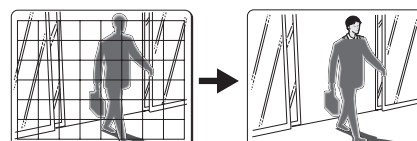
- CENTER (Center-weighted average metering)



- MASKING (Light source masking)



- FACE (Face detection backlight compensation)

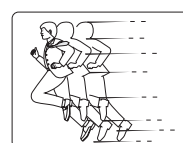


SHUTTER

Sets the electronic shutter speed.

- SHORT (Fast shutter speed)
- LONG (Long exposure shutter speed)
- OFF

- If [SHUTTER] cannot be set to "SHORT" or "LONG", [SENSE UP] is set for [IRIS (AUTO)].

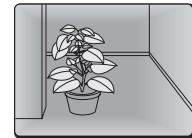


AGC

You can monitor subjects in the dark places.

- ON
 - Automatically adjusts according to the ambient brightness.
- OFF

- You may make adjust manually. If [AGC] cannot be set to "OFF", [DAY/NIGHT] is set to "AUTO" or [SENSE UP] is set for [IRIS (AUTO)].



DAY/NIGHT

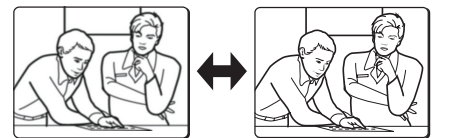
Switches between color and black-and-white modes.

- AUTO (Automatically switches between color and black-and-white modes according to the ambient brightness)
- If [DAY/NIGHT] is set to "AUTO", [AGC] is set to "ON".
- COLOR (Fixes the video mode to color.)
- B/W (Fixes the video mode to black-and-white.)



QUALITY

Adjusts contour, color saturation, contrast, and so on.



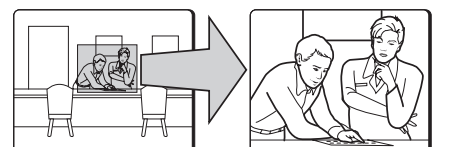
FOCUS

Sets the focusing mode.

- AUTO
- MANUAL

ZOOM

Sets the optical zooming speed and electronic zooming magnification.



PRIVACY MASK

Sets masks on certain part of the image for privacy protection.

- You can set up to 5 masks.

