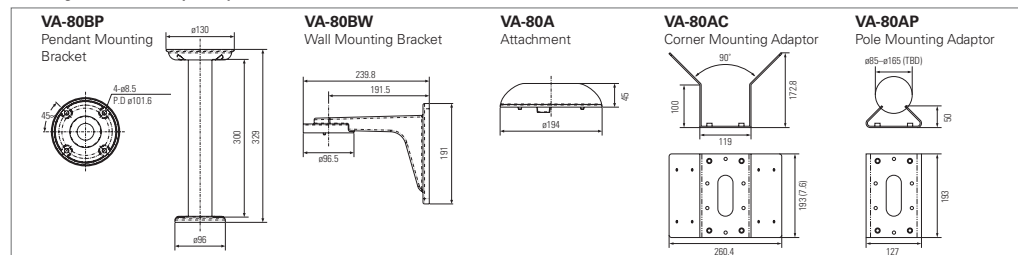


Applications

Available in three types: Outdoor, Surface or In-Ceiling. Assemble them with different fittings and covers to make the camera most suitable for your surveillance needs.



Mounting Brackets (sold separately)



VCC-9500P
Color 30x zoom

VCC-9600P
DAY NIGHT Color 30x zoom

VCC-9700P
Color 36x zoom

VCC-9800P
DAY NIGHT Color 30x zoom



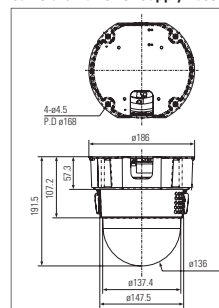
High-Performance Speed Dome Camera Systems

- High speed panning at 435° per second
- Image stabilizer*
- Auto tracking*
- Extra 5 degrees TILT range (-5 to 185°) for an expanded area of surveillance
- Up to 256 preset positions
- Up to 24 privacy masking areas
- 8 alarm inputs
- Flexible motion detection
- Optional LAN board JPEG/H.264
- 4 years warranty on camera (1 year movable parts)

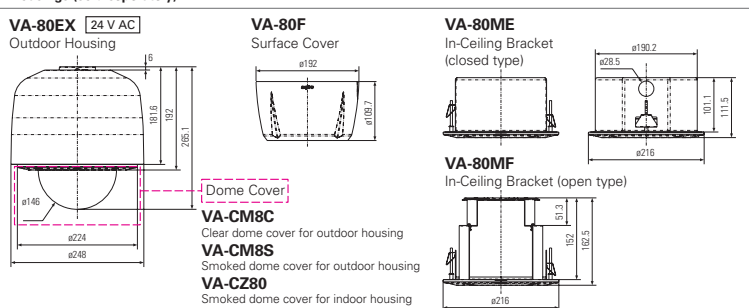
VCC-9800P | VCC-9700P | VCC-9600P | VCC-9500P

TECHNICAL DATA		VCC-9800P E	VCC-9700P E	VCC-9600P E	VCC-9500P E
Scanning system		PAL standard 625 lines, 50 fields/sec.			
Image sensor		1/4" (approx. 3.6 mm x 2.7 mm) interline transfer method CCD			
Picture elements		Total: 795 (H) x 596 (V), Effective: 752 (H) x 582 (V)			
Horizontal resolution		540 TV lines			
Minimum illumination (approx.)	50 IRE	1.0 lx (at F 1.6 GAIN: HIGH color mode) 0.05 lx (at F 1.6 B/W mode)	1.0 lx (at F 1.6 GAIN: HIGH color mode)	0.8 lx (at F 1.4 GAIN: HIGH color mode) 0.04 lx (at F 1.6 B/W mode)	0.8 lx (at F 1.4 GAIN: HIGH color mode)
	20 IRE	0.4 lx (at F 1.6 GAIN: HIGH color mode) 0.02 lx (at F 1.6 B/W mode)	0.4 lx (at F 1.6 GAIN: HIGH color mode)	0.32 lx (at F 1.4 GAIN: HIGH color mode) 0.016 lx (at F 1.6 B/W mode)	0.32 lx (at F 1.4 GAIN: HIGH color mode)
Electronic sensitivity boost		Auto (interlocked with auto iris), up to 32 x/OFF			
Video S/N ratio		More than 50 dB (AGC OFF)			
Backlight compensation		ON/OFF – Slide SW, ON = Multi-spot photometry (48-section)/5-section photometry/Multi-spot masking (48-section)			
White balance		ATW/AWC/Manual/Outdoor/Indoor/Fluorescent			
Gain control		Low/Normal/Middle/High/Off			
Electronic shutter	High-speed mode	8 steps: 1/50, 1/120, 1/250, 1/500, 1/1,000, 1/2,000, 1/4,000, 1/10,000			
	Low-speed mode	5 steps: 2x, 4x, 8x, 16x, 32x (1/25, 1/12, 1/6, 1/3, 1/1.5)			
Zoom lens		36 x optical zoom, f = 3.4 to 122.4 mm, (F 1.6 to 4.5) ON/OFF, up to 16x electronic zoom (Max. 576 x combined with optical zoom)		30 x optical zoom, f = 3.5 to 105 mm, (F 1.4 to 3.7) ON/OFF, up to 16x electronic zoom (Max. 480 x combined with optical zoom)	
Auto focus		Auto/One-push/Manual			
Iris control		Auto/Manual			
Backlight compensation		Centerweighted average metering/multi-spot evaluative metering			
Day/night operation		Auto/Color/B/W settings		Auto/Color/B/W settings	
Electronic sensitivity boosting		Auto/OFF, works with auto iris, settings up to 32x setting possible		-	
Aperture		H/V setting possible			
Privacy masking		ON/OFF, max. of 24 masked locations (wide view screen; 1 screen max, 4 masks) all-around privacy masking			
Alarm input/output		External inputs: 8, external outputs: 2, NO (Normal Open)/NC (Normal Closed) switch, motion detection with external alarm AND/OR output options			
Preset positions		256		128	
Movement range	Panning	360° endless			
	Tilting	-5 to 185° (Digital auto flip ON)			
Movement speed	Panning	Preset: 435°/sec, Manual: 0.1 to 120°/sec			
	Tilting	Preset: 400°/sec, Manual: 0.1 to 120°/sec			
Motion detector		On (PRESET, ZONE) / Off: Motion zoom function			
Synchronizing system		Internal sync./Line lock (LINE PHASE)			
V phase adjustment		LINE PHASE			
Communication		RS-485/Coaxial control (SSP)			
Protocols		SANYO, Pelco-D, Other (T.B.D)			
Environmental conditions	Temperature	-10 °C to 50 °C, -30 °C to 50 °C when the outdoor housing, VA-80EX is used			
	Humidity	30% to 90% RH			
Power requirement		24 V AC ±10% 50 Hz or 230 V AC, 50 Hz			
Power consumption	Camera unit + Power supply base	16 W: VCC-MC800P + VA-84S 17 W: VCC-MC800P + VA-80S	16 W: VCC-MC700P + VA-84S 17 W: VCC-MC700P + VA-80S	16 W: VCC-MC600P + VA-84S 17 W: VCC-MC600P + VA-80S	16 W: VCC-MC500P + VA-84S 17 W: VCC-MC500P + VA-80S
	Outdoor housing	35 W: VA-80EX			
Weight	Outdoor types	5.1 kg=VCC-9800EXCP/9800EXSP; VCC-9830EXCP/9830EXSP	5.1 kg=VCC-9700EXCP/9700EXSP; VCC-9730EXCP/9730EXSP	5.1 kg=VCC-9600EXCP/9600EXSP; VCC-9630EXCP/9630EXSP	5.1 kg=VCC-9500EXCP/9500EXSP; VCC-9530EXCP/9530EXSP
	Surface types	2.4 kg=VCC-9800INP; VCC-9830INP	2.4 kg=VCC-9700INP; VCC-9730INP	2.4 kg=VCC-9600INP; VCC-9630INP	2.4 kg=VCC-9500INP; VCC-9530INP
	In-ceiling types	3.4 kg=VCC-9800EMP; VCC-9830EMP 2.7 kg=VCC-9800EFP; VCC-9830EFP	3.4 kg=VCC-9700EMP; VCC-9730EMP 2.7 kg=VCC-9700EFP; VCC-9730EFP	3.4 kg=VCC-9600EMP; VCC-9630EMP 2.7 kg=VCC-9600EFP; VCC-9630EFP	3.4 kg=VCC-9500EMP; VCC-9530EMP 2.7 kg=VCC-9500EFP; VCC-9530EFP
Accessories (sold separately)		VAC-70 camera control unit			

Camera Unit/Power Supply Base



Housings (sold separately)



Network board

Network board	VA-82LAN
Image compression	JPEG/H.264
Resolution	720 x 576, 720 x 288, 640 x 480, 360 x 288, 176 x 144
	H.264 720 x 576, 352 x 288, 176 x 144
Picture quality	5 levels
Frame rate	Max. 25 IPS (720 x 576)
	H.264 Max. 25 IPS (720 x 576)
Audio compression method	TBD
Microphone input	-62 to -32 dB (monaural microphone) Ø 3.5 mm mini jack
Audio output	Line out, monaural audio output, max. -8 dB, Ø 3.5 mm mini jack
Bandwidth	128, 256, 512 Kbps, 1, 2, 3, 4 Mbps, no limitation
Alarm buffer	Up to 8 MB; configurable
Interface	10 BASE-T/100 BASE-TX (RJ-45 connector)
Protocols	TCP/IP, UDP, HTTP, HTTPS, SMTP, NTP, DHCP, FTP, UPnP
Simultaneous access capacity	Image: max. 16, Voice: mmax. 16 (admin: 1)
Security	BASIC authentication (ID/password), SSL supported (Image only)
System requirements	PC IE: CPU: Pentium® IV 2.0 GHz or higher; Memory: 512 MB; SW3050: CPU 3.0 GHz; Memory: 1 GB or more; Recommended graphics chip: GEFORCE 6000 series or higher; OS: Windows® XP
Bundled software	VA-SW3050 LITE
Ambient temperature	-10 to +50 °C
Accessories (sold separately)	VA-SW3050 (network recorder)