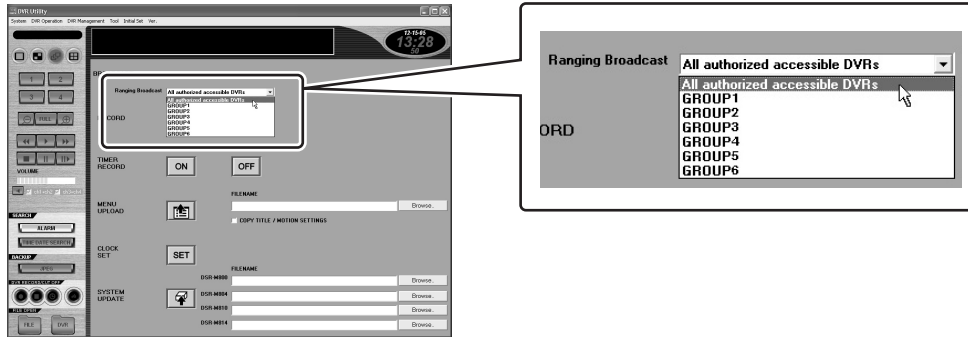


■ Configuring with the [Broadcast] Window (see P70)

The [Ranging Broadcast] menu has been added.



When “Apply authorized accessible DVRs” is selected for [Broadcast Range] in [AUTHORIZED DVR ACCESS] accessible from the [User ID] window, you will be able to select either of the followings as broadcasting range from the pull-down menu.

- **All authorized accessible DVRs:**

Selecting “All authorized accessible DVRs” makes the broadcast to be sent to all DVR groups authorized for access.

- **An individual DVR group:**

Selecting an individual group makes the broadcast to be sent to that particular DVR group.

(Reference) DVR access limitation settings and broadcasting range

DVR access limitation setting		Broadcasting range
Limit accessible DVRs	Broadcast Range	
All DVRs	—	Broadcast is sent to all DVRs. ([Ranging Broadcast] is disabled.)
Limited DVRs	Not allowed	Switching to [Broadcast] window is disabled.
	Apply authorized accessible DVRs	Broadcasting range is determined using the [Ranging Broadcast].
	All DVRs	Broadcast is sent to all DVRs, including those not authorized for access. ([Ranging Broadcast] is disabled.)

INSTRUCTION MANUAL (Additional Functions)

DVR Utility Software

The DVR access limitation function has been added. As a result, the following settings can be configured per user.

- Accessible DVR group
- Broadcasting permission, or broadcasting range

For details, see the following descriptions.

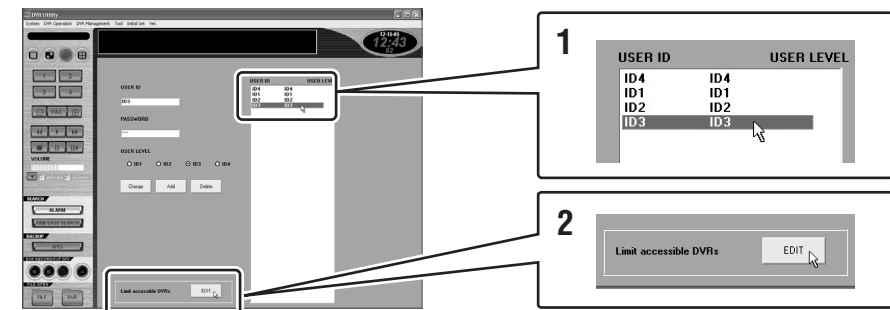
Note:

About the Slave Computer Settings

- Be sure to enter the master computer's IP address in the [MASTER CONTROL PC] field for a computer with [PC TYPE] set to “SLAVE”.
- Be sure to change the default password settings for each user level (ID4 to ID1) to restrict operations not allowed to be performed from slave computers.

■ Configuring with the [User ID] Window (see P89)

The DVR access limitation can only be configured by a user with user access level ID4, using the [User ID] window accessible from the Initial Set menu. To configure the DVR access limitation settings, follow these steps.



1 Specify the user.

Click the target user from the User registration list. The user ID and the user access level are highlighted in blue.

2 Click [EDIT] for [Limit accessible DVRs].

This is a newly added menu button. Clicking this button displays the [AUTHORIZED DVR ACCESS] dialog box.

■ Configuring with the [User ID] Window (see P89) (continued)

3 Configure [Limit accessible DVRs].

Select whether to limit the accessible DVRs or not.

Options:

● All DVRs (default):

Unlimited DVR access
→All DVRs are accessible.

● Limited DVRs:

Limited DVR access
→Configure the limitations by setting [Authorized Accessible DVR Group] (step 4) and [Broadcast Range] (step 5).

Memo:

If you select a DVR not authorized for access from the Tree List when selecting “Limited DVRs”, a confirmation dialog box with the message “Not allowed to access this camera.” appears.

4 Configure [Authorized Accessible DVR Group] settings.

The DVR groups registered in the [Register DVR] window accessible from the Initial Set menu are listed. Selecting the check box of a group authorizes the access to the group.

To work with multiple groups, use the following buttons.

● [Select All] button:

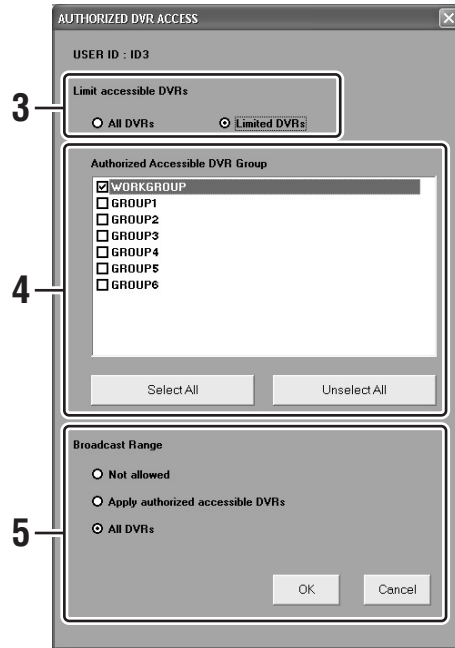
Click the DVR groups with the [Shift] or [Ctrl] key held down and highlight the groups. Then click the button. All the check boxes of the highlighted groups will be selected.

● [Unselect All] button:

To deselect multiple groups, perform an operation similar to the above.

Memo:

DVR groups (or DVRs/cameras under the group) not authorized for access cannot be selected from the Tree List. However, these groups are still accessible to users with user access level ID4 for the purpose of Tree List editing.



5 Configure [Broadcast Range] settings.

Select the broadcasting range using the radio buttons.

The Notes related to the selected option described below are displayed in a confirmation dialog box when the relevant button is selected. Check the content and click [OK].

Options	Descriptions
Not allowed	Broadcast operations are not permitted.
Apply authorized accessible DVRs	<p>Broadcast is possible only to the DVR groups authorized for access in [Authorized Accessible DVR Group] (step 4).</p> <p>Note: Broadcast may not be possible depending on the DVR model and firmware version.</p> <ul style="list-style-type: none"> ● DSR-M810(P)/M814(P): Broadcast is possible only when the DVR firmware version is 2.20 or higher. ● DSR-M800(P)/M804(P): Broadcast to these models is not possible.
All DVRs	<p>Broadcast is possible to all DVRs.</p> <p>Note: Broadcast is sent also to DVR groups not authorized for access in [Authorized Accessible DVR Group] (step 4).</p>

Memo:

You will not be able to advance to the next step if you have not configured the [Broadcast Range] settings.

You will not be able to configure the [Broadcast Range] settings in the following cases.

- The access level of the target user is ID1/ID2 (users not allowed to perform broadcast operations).
- The software you are using is VA-SW8000LITE (software not supporting the broadcast function).

6 Click [OK].

Save the DVR access limitations settings and close the dialog box.