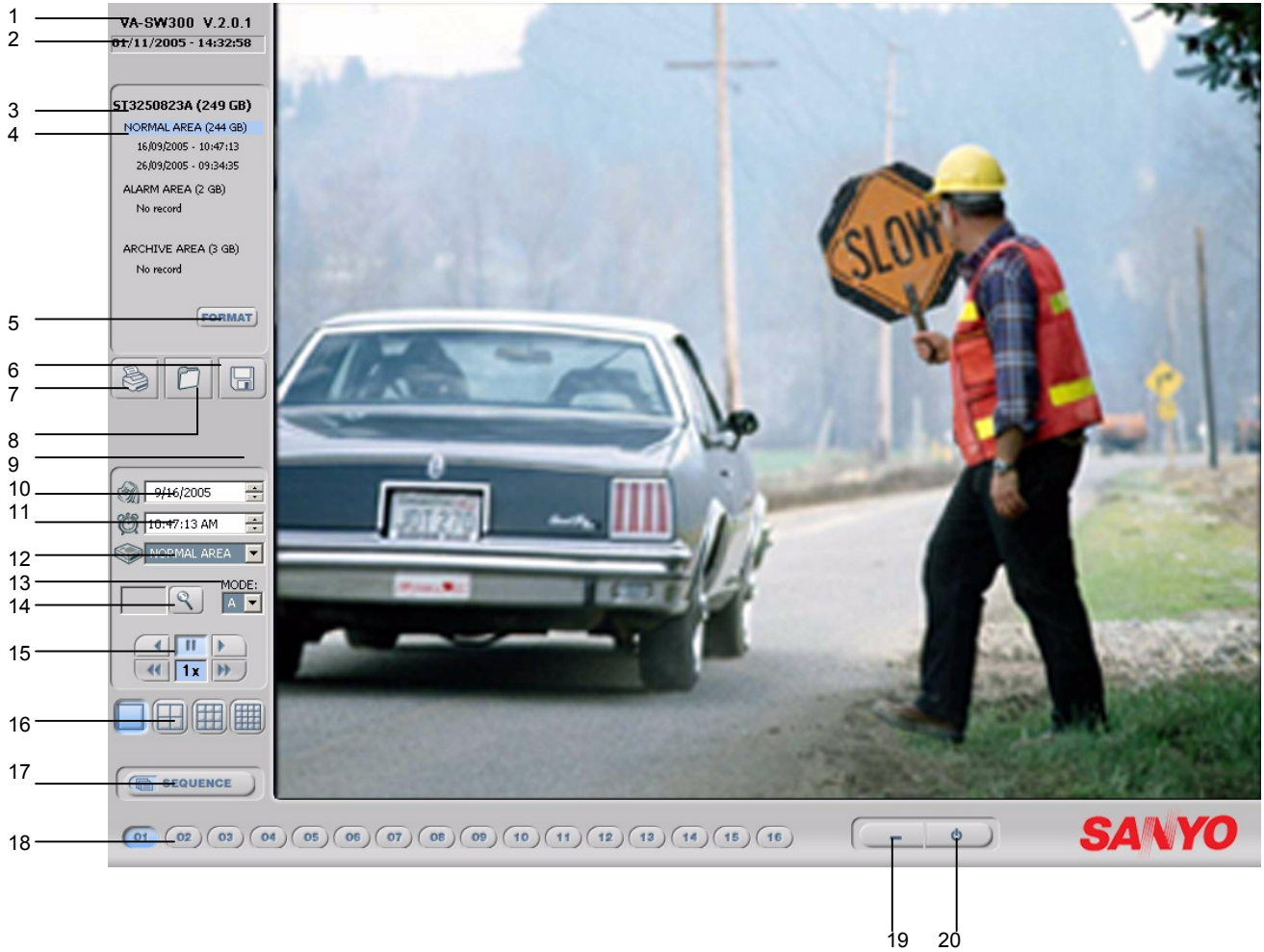
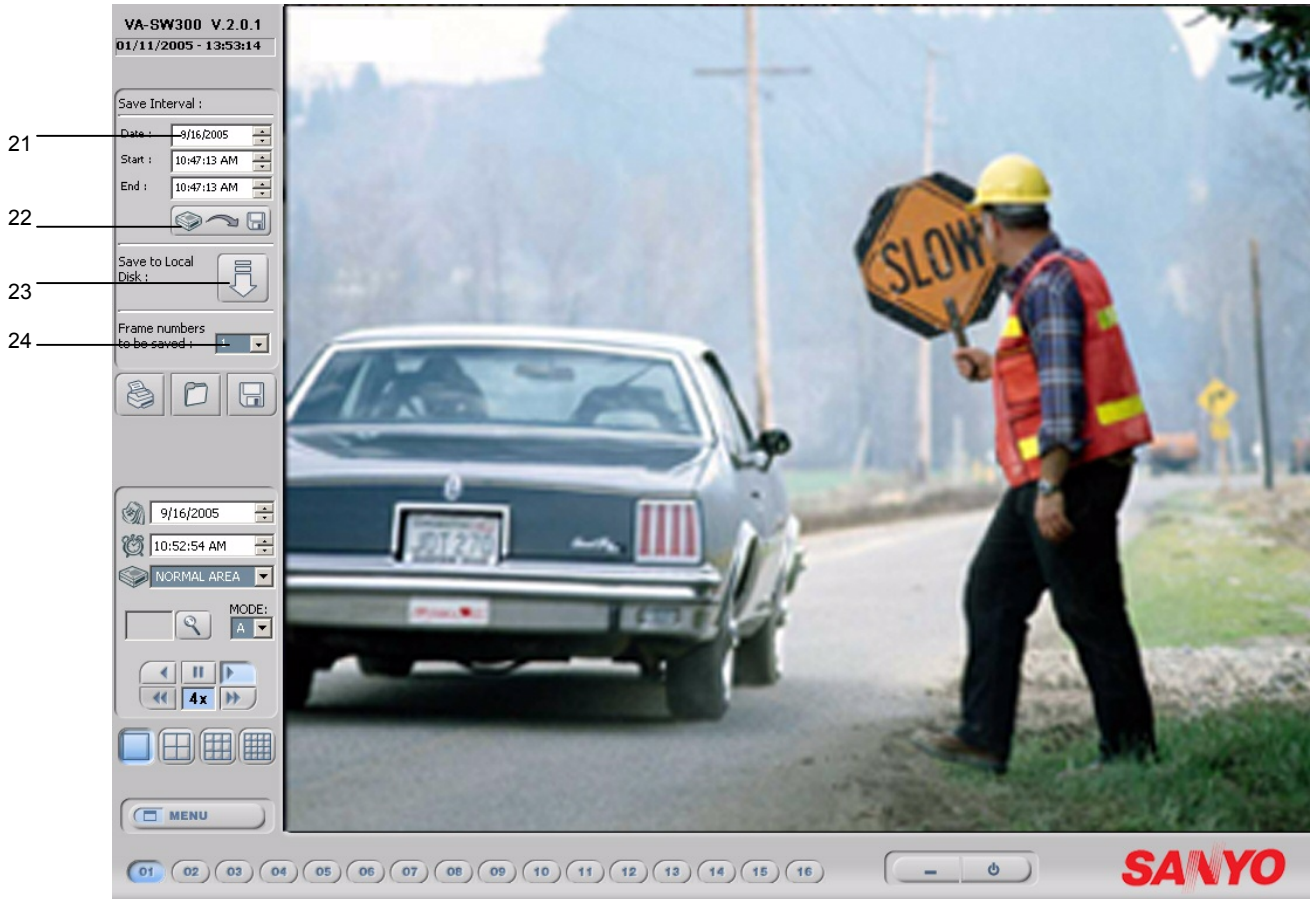


Sanyo VA-SW300 Software Quick Guide



19 20



1. Software and Version number : Indicates the Sanyo software code and the version number belonging to it.
2. Current date and time.
3. Disk model and size : Indicates the model and the size of the hard disk.
4. Disk Area:
 - Normal area (size)** : Indicates the normal area size of the disk.
 - Initial Record time of normal area : Indicates the first record time in the normal area. The same applies to alarm and storage area.
 - Final record time of normal area : Indicates the last record time in the normal area. The same applies to alarm and storage area.

Alarm area (size) : Indicates the alarm area size of the disk.

Storage area (size) : Indicates the storage area size of the disk.

5. Format: Click Here to format the disk. You will be asked two times if you are sure.
6. Save : Saves the images under a determined folder as "jpeg" files.
7. Print : Prints the image displayed on the screen. If there is not a default printer connected to the computer it gives an error message. It only prints one image at once.
8. New folder : Changes the path of images storage folder. Default path is **./Images/** folder. Firstly click New Folder Button to open path dialog and select your new folder to save images. Then click the button again to confirm the operation. (Default path is **./Bilder/** for Deutsch, **./Resimler/** for Türkçe Language)
9. Status : Indicates the current status.
10. Image date : Indicates the date of the image displayed on the screen.
11. Image time : Indicates the time of the image displayed on the screen.
12. Selected Area : Indicates whether the normal area , alarm area or storage area is selected. Default is normal area.
13. Mode selection : "A" is for normal playing which you can manually determine the speed of the playback. "B" is for frame by frame playback. When you select the "B" mode press the play button or play backwards button to play images frame by frame.
14. Search button and status : Searches the closest record to determined image date and image time. If you lost your images, use this button.
15. Play and rate buttons : Adjusts the playback rate. Play, pause and rewind.
Rate indicator : Indicates the determined playback rate. 1x is default.
16. Window selection : Switches between 1,4,9 and 16 windowed mode.
17. Sequence menu selection
You can save the pictures to your local hard disk in this menu.
18. Channel : switches between cameras.
19. Minimize button. Minimizes the program window.
20. Close button: Closes the program.
21. Adjust the Start and End points of the period that you like to save pictures.
22. Click this button to start saving images
23. Save to local disk.
When you are in playback mode click to to begin saving images to your local hard disk.
The button will turn into End button once you click. Click the End button to stop saving
24. Frame numbers to be saved. This setting will be used when you are saving picture in The Normal Menu when you click the Disk ikon (Number 8)
25. Normal Menu. Click this icon to return to the normal menu.

Note1: Double clicking the left mouse button on image switches the program to fullscreen mode.

Note2: Double clicking the right mouse button on image saves images as ".AVI" format in your selected path, until you double clicking the right button of mouse again . (it works only in 1-windowed mode)