

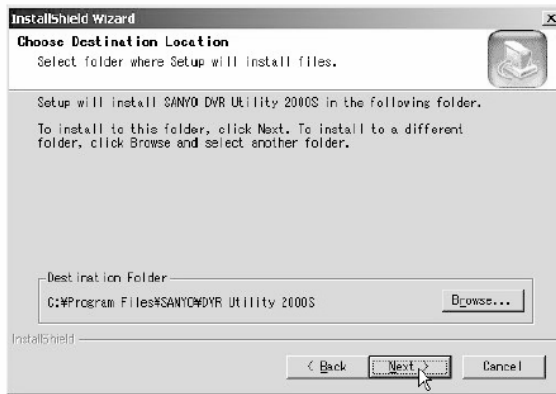
**1****Unzip file and then double click Sanyo Client.exe**

The installer runs.

**2**

Confirm the installation destination folder on the "Choose Destination Location" screen and click [Next].

To change the installation destination folder, click [Browse] and select a folder.

**3**

Select the setup type on the [Setup Type] screen and click [Next].

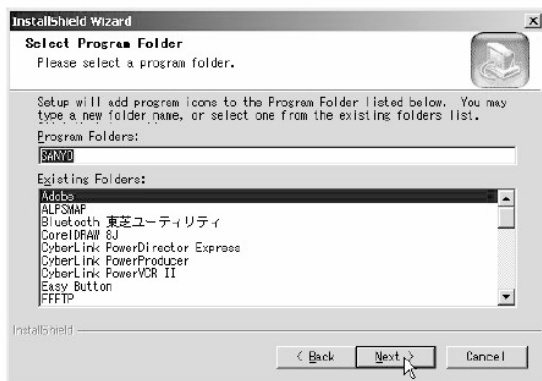


- In general, select "**Typical**". Depending on the performance of the PC the program may not operate. In that case, re-install "**Light**".

**4**

Confirm the program folder in the "Select Program Folder" screen and click [Next].

To install to a different program folder, input the folder name in the box directly or select a folder from the [Existing Folders] list.

**5**

The software starts installing.

The progress of the installation is displayed on the "Setup Status" screen.

**6**

Installation is complete.

Once the installation is complete, the "DVR Utility 2000S" shortcut icon is displayed on the desktop.



Double-click this icon to start the software.